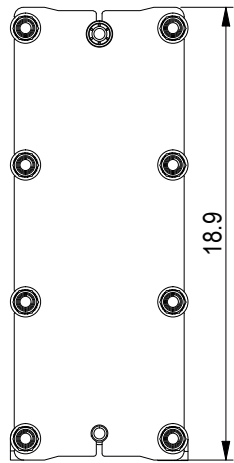
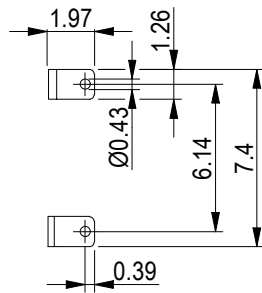
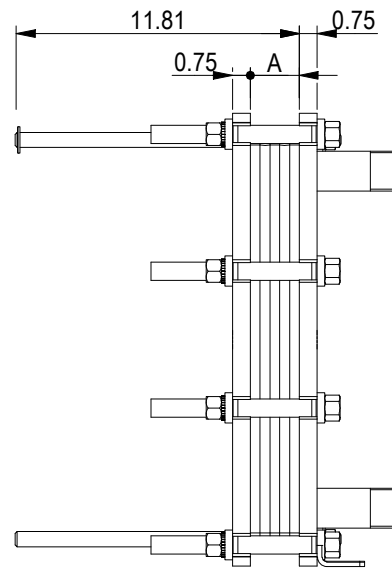


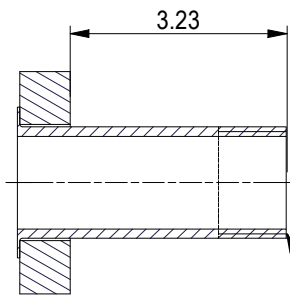
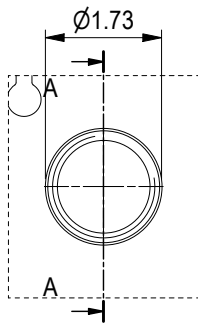
PRESSURE PLATE
(MOVABLE)



Space between pressure plate and supporting column should be kept free from fixed installations!



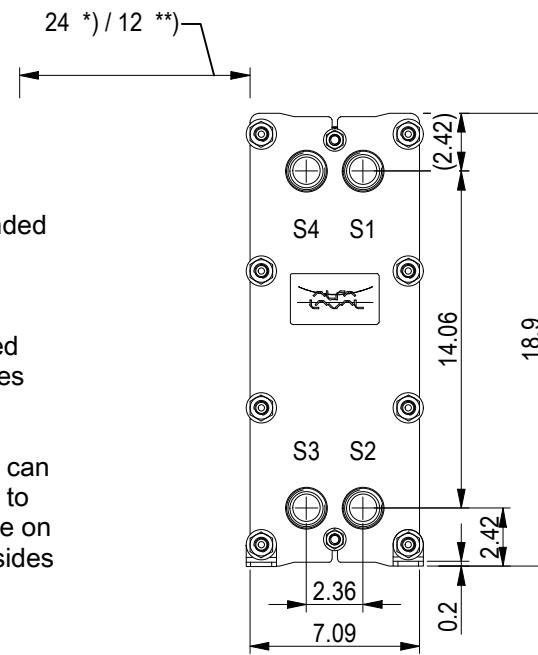
ASME B1.20.1 - 1 1/4-11.5 NPT, ALLOY 316, 101 mm
S1, S2, S3, S4 A-A:



NO. OF UNITS 1

20.0 GPM
20.0 GPM

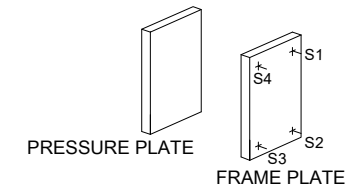
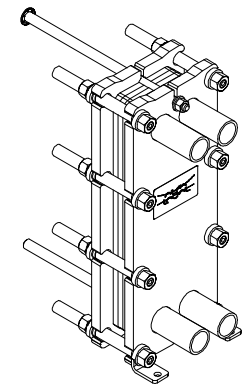
FRAME PLATE



*) Recommended free space for opening and closing to be applied on both sides

**) Free space can be reduced to this distance on one of the sides

All dimensions in inches



APPROX. OUTER DIMENSIONS	
LENGTH	12.2 in
WIDTH	7.5 in
HEIGHT	19.3 in
APPROX. WEIGHTS	
NET WEIGHT, EMPTY	69.7 lb
WEIGHT FULL OF WATER	74.3 lb
PLATE MATERIAL	ALLOY 316
PLATE THICKNESS	0.5 mm
GASKET	NBRP Clip-on

CHANNEL ARRANGEMENT 1*9 MH / 1*10 ML



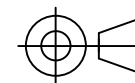
www.alfalaval.com

DRAWING
GASKETED PLATE HEAT EXCHANGER

M3-FG

ASME
Code Section VIII Div.1

MAWP 145 psi at 150.1 °F
MDMT 32.0 °F at 145 psi
Designed and constructed in accordance with the 2019 ASME Code.



8240171381
M3-FG-20 Plates

Do not use this drawing for foundation bolting or piping layout

DATE 6/1/22
REVISION 0